

Sizing & Naming Images for Projected Digital Images Competitions

Introduction

When submitting images for use in Bury St Edmunds Photographic society competitions the image sizing and naming recommendations are as follows:

1. The maximum dimensions of the images should not exceed 1400px wide, 1050px high (the resolution of the club projector).

For landscape orientated images this means the width should not exceed 1400px, for portrait orientated images the height should not exceed 1050px. If you submit images larger than these guidelines the projection software will rescale the image to fit but may not be optimally to your liking.

If your image does not completely fill the 1400x1050 image area you may optionally fill the rest of the image space with a colour you think appropriate. However if you chose not to fill complete image space the projection software will automatically fill the un-used space with black.

2. The images should be saved using the sRGB colour profile.

The projection software is colour managed and will display Adobe-RGB profiled images but we want to ensure consistency between images.

3. The images should be saved as JPGs preferably at maximum/100% quality.
4. The images should be named with the following convention: [Title]--[Author].jpg (note: no spaces around the double hyphen)

For example: "A Bad Day at the Office--Andrew Stawarz.jpg"

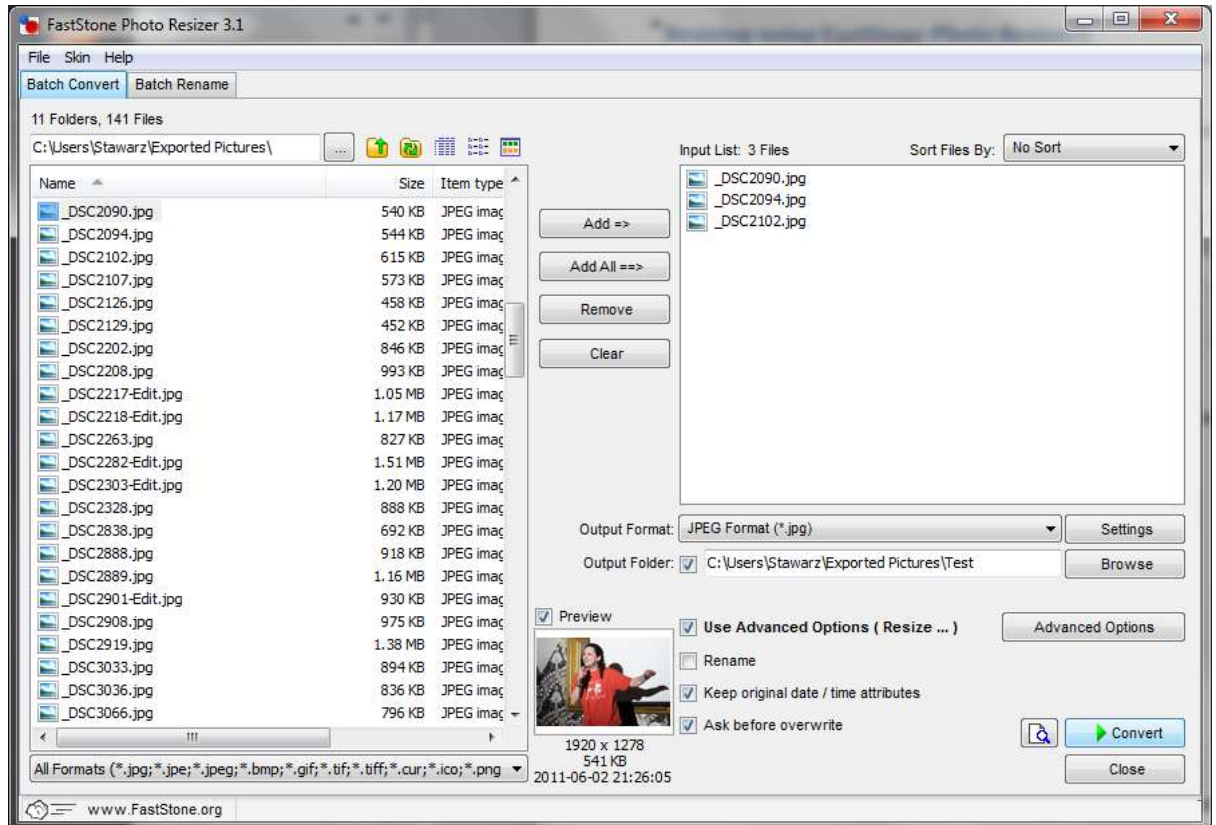
5. It is preferred the images have their EXIF/ITPC/XMP metadata set with the image title and creator.
6. The images should be submitted on a CD-ROM or Memory stick (that is labelled with your name) at the meeting the week before the projected digital image competition, or, emailed to the club address pdi@bseps.com. Missing these deadlines (or not making prior arrangements) will mean your images will not be accepted. Memory sticks and CD-ROMs will be returned on the night of the competition.

Note: The software the society uses for projected digital image is Film Free Projection.

Resizing using FastStone Photo Resizer

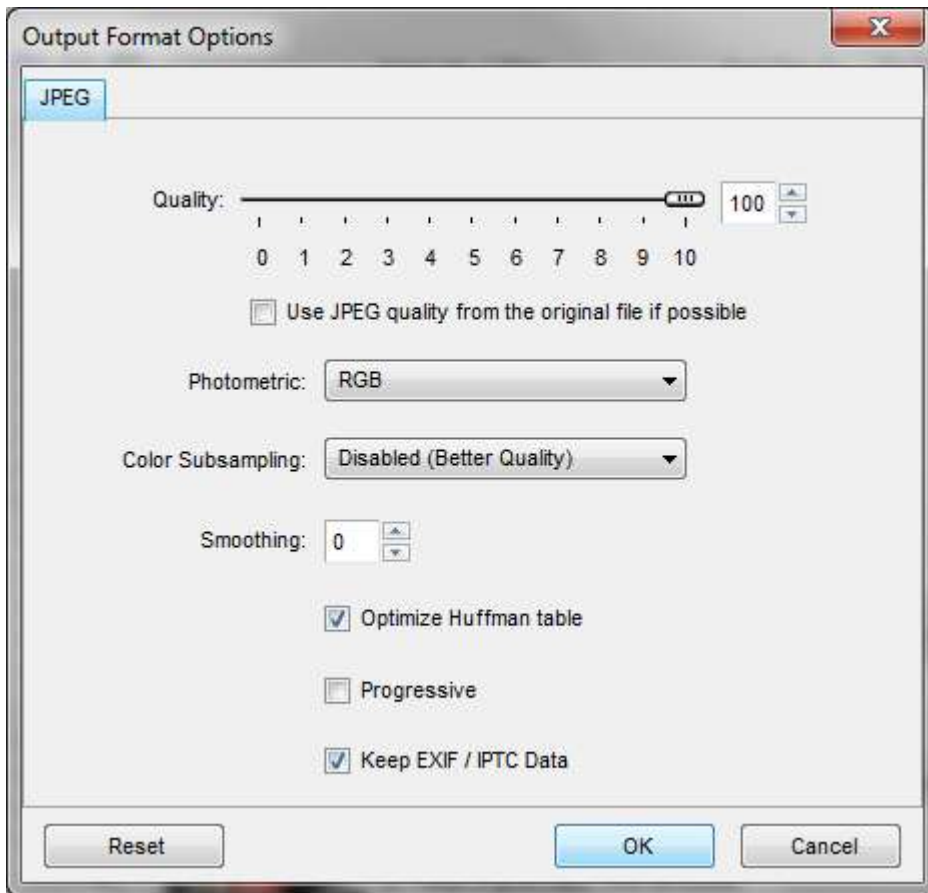
A handy batch image resizer for use on the windows platform is the freeware FastStone Photo Resizer available from <http://www.faststone.org>

1. First browse for the folder where your original image files are located and add them to the Input list on the right using the Add or Add All buttons in the middle:

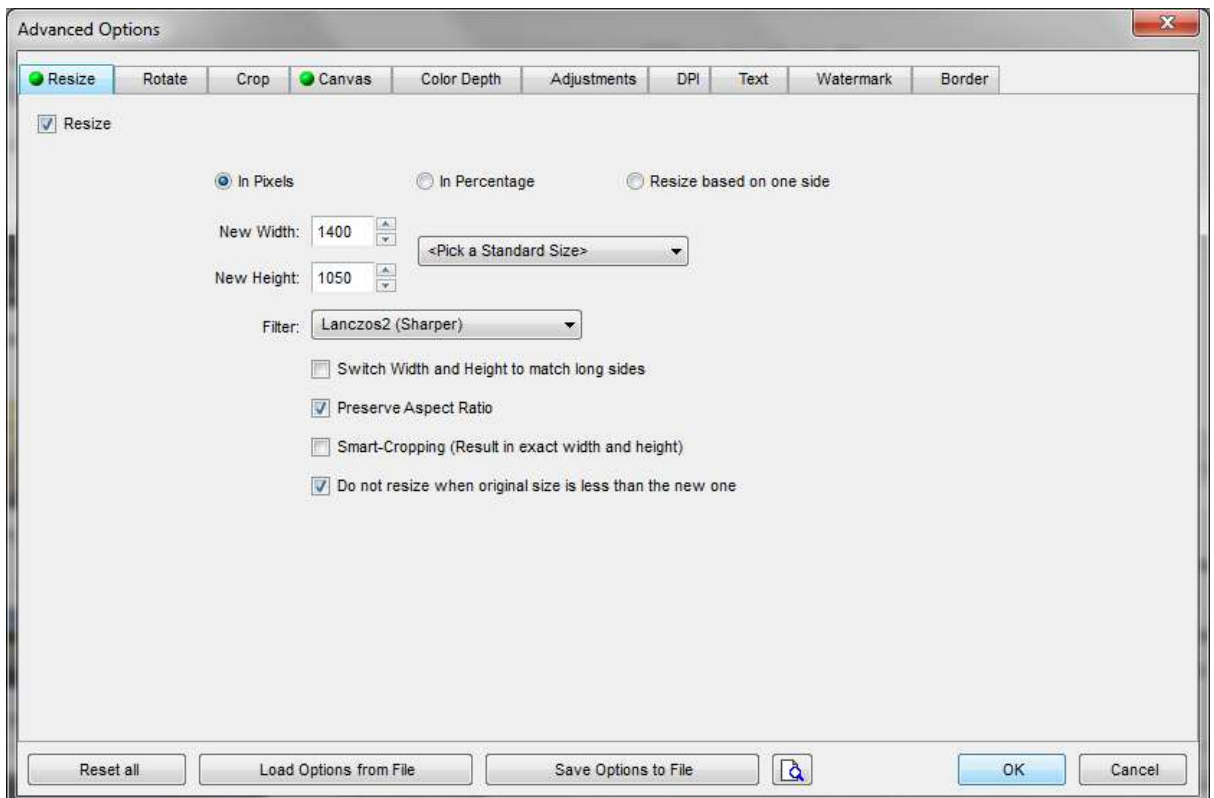


Then set the Output Format to JPEG, check the Use Advanced Options and Keep original date/time attributes options.

2. To prevent overwriting the original images either use the rename option or choose a different folder to output to.
3. For the JPEG file settings set the Quality to 10 and disable Color Subsampling:

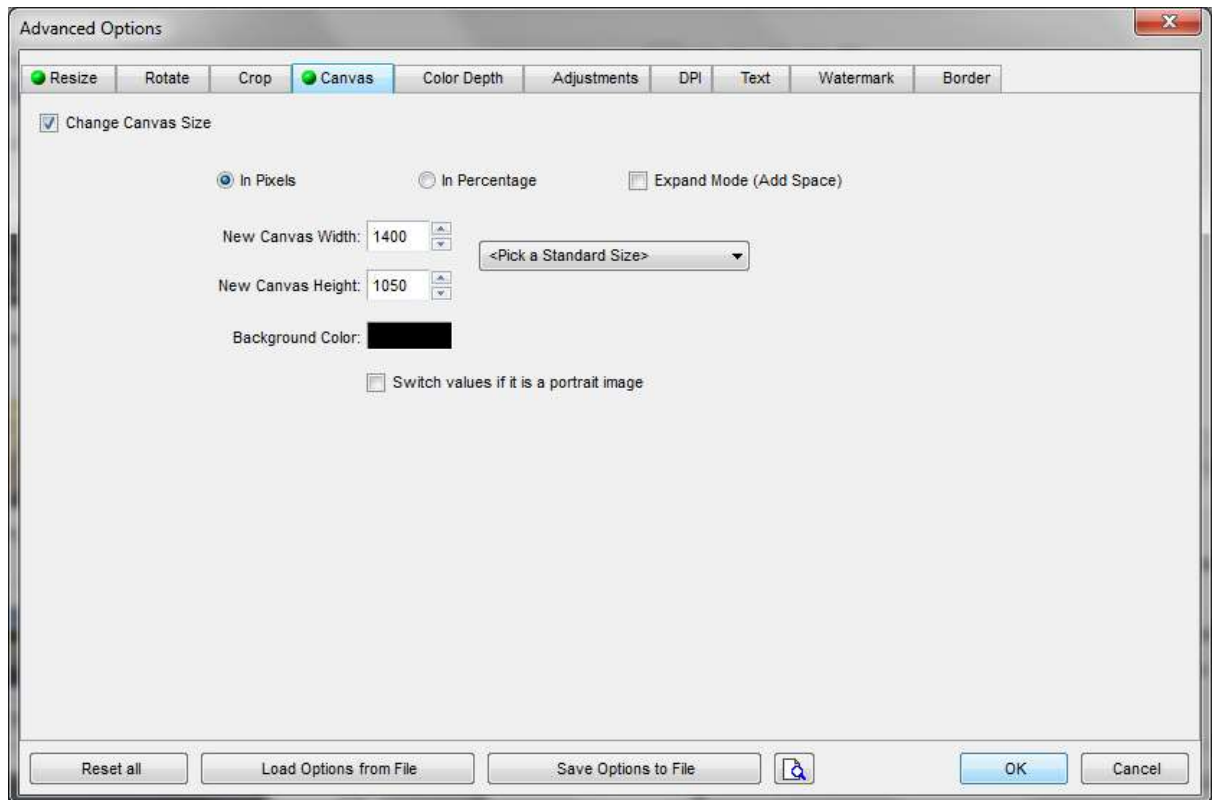


4. The output image size is defined in the Advanced Options. Select the Resize tab and set the New Width and New Height to 1400px and 1050px respectively:



5. If you want to fill in the un-used portions of the image (i.e. fill with black bars top and bottom for a landscape orientated image or left and right for a portrait orientated image), use the Canvas tab in the Advanced Options.

Set the New Canvas Width and New Canvas Height to 1400px and 1050px respectively and then choose a Background Color:

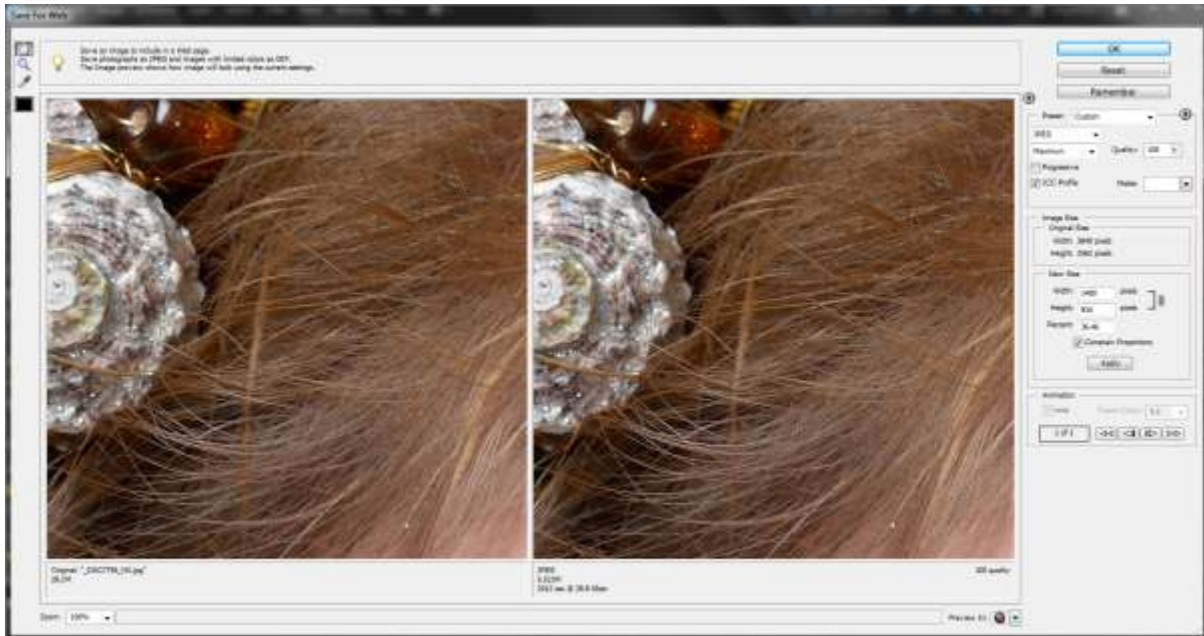


6. Now you're ready to convert the files you've previously selected. Press Convert.

Exporting from Photoshop Elements

Simple Method

The simplest method to save an image currently open in the Photoshop Elements editor is to use the “Save for Web...” option found in the File menu:



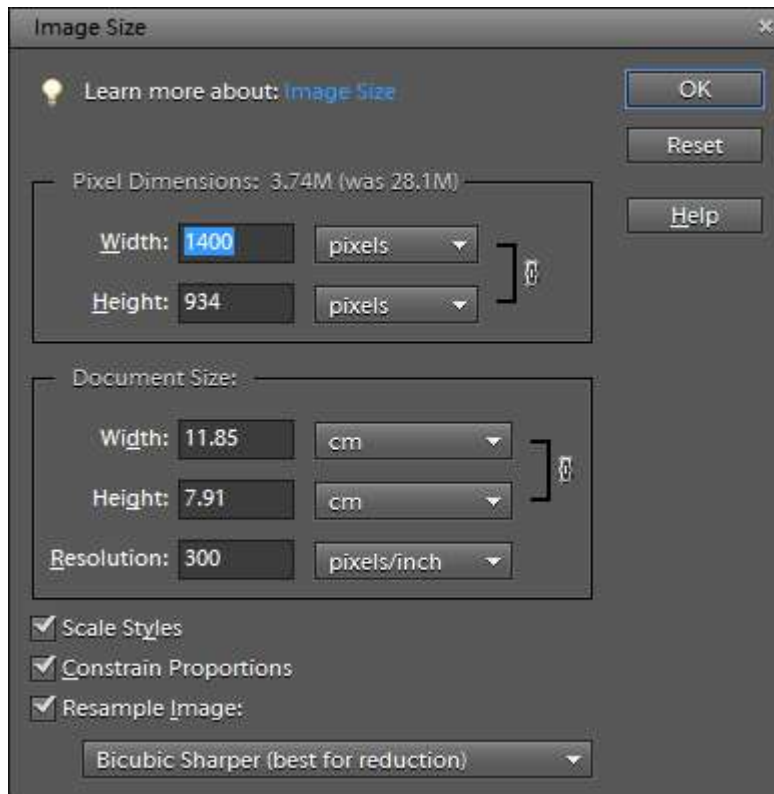
You can readily set the file type to JPG, the Quality to 100, check the ICC box and a New Size of 1400 wide for landscape images or 1050 high for portrait images (when the “Constrain Properties” box is checked the other dimension is calculated automatically).

Press OK and you are then to specify the name and where to save the file. Remember to use the recommended naming convention described in the introduction.

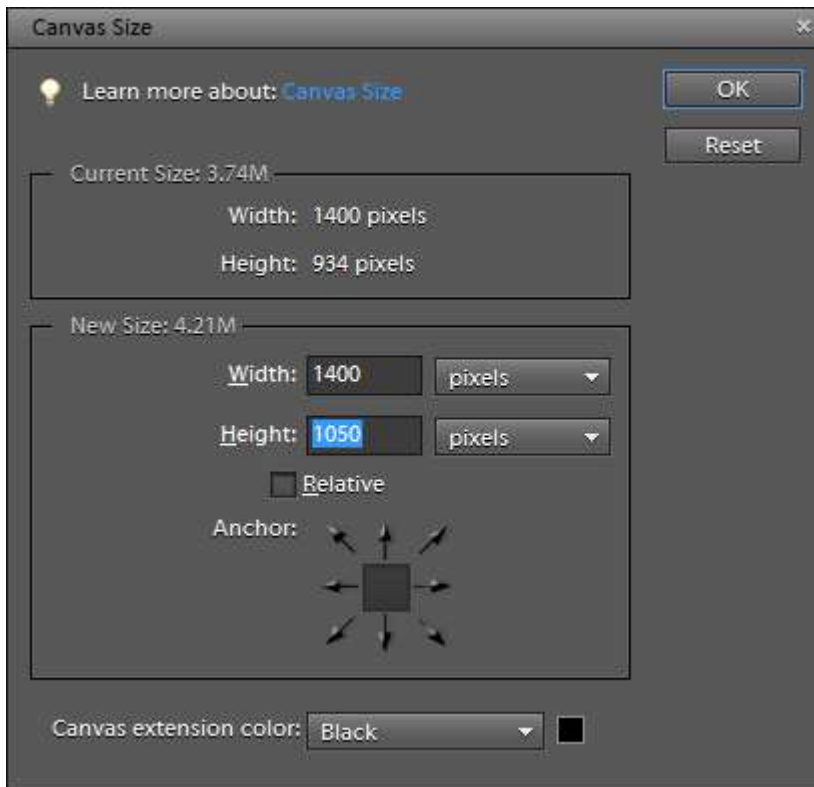
Extended Method

The traditional method of resizing an image is as follows:

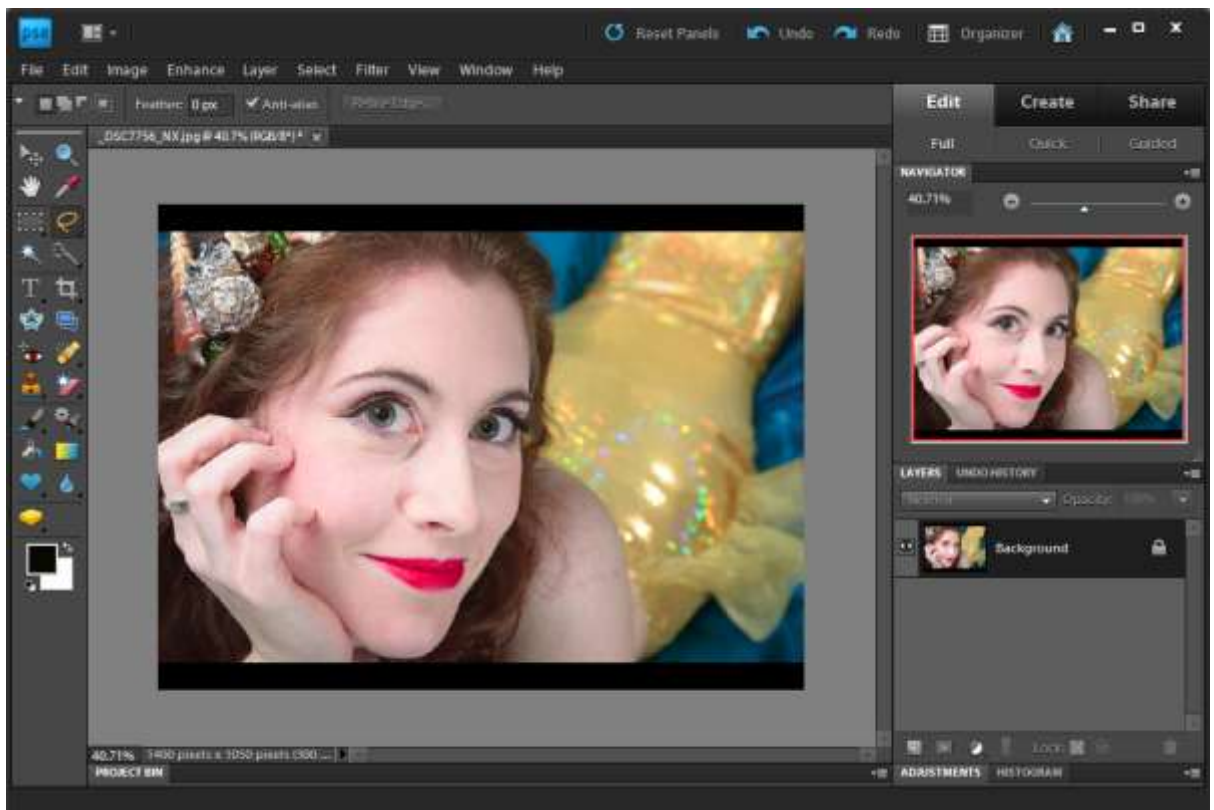
1. First flatten all layers (if any are present) using the Layer menu, Flatten Image option.
2. First we need to resize the image to fit within the 1400px x 1050px maximum. To do this select the Resize, Image Size... option under the Image menu



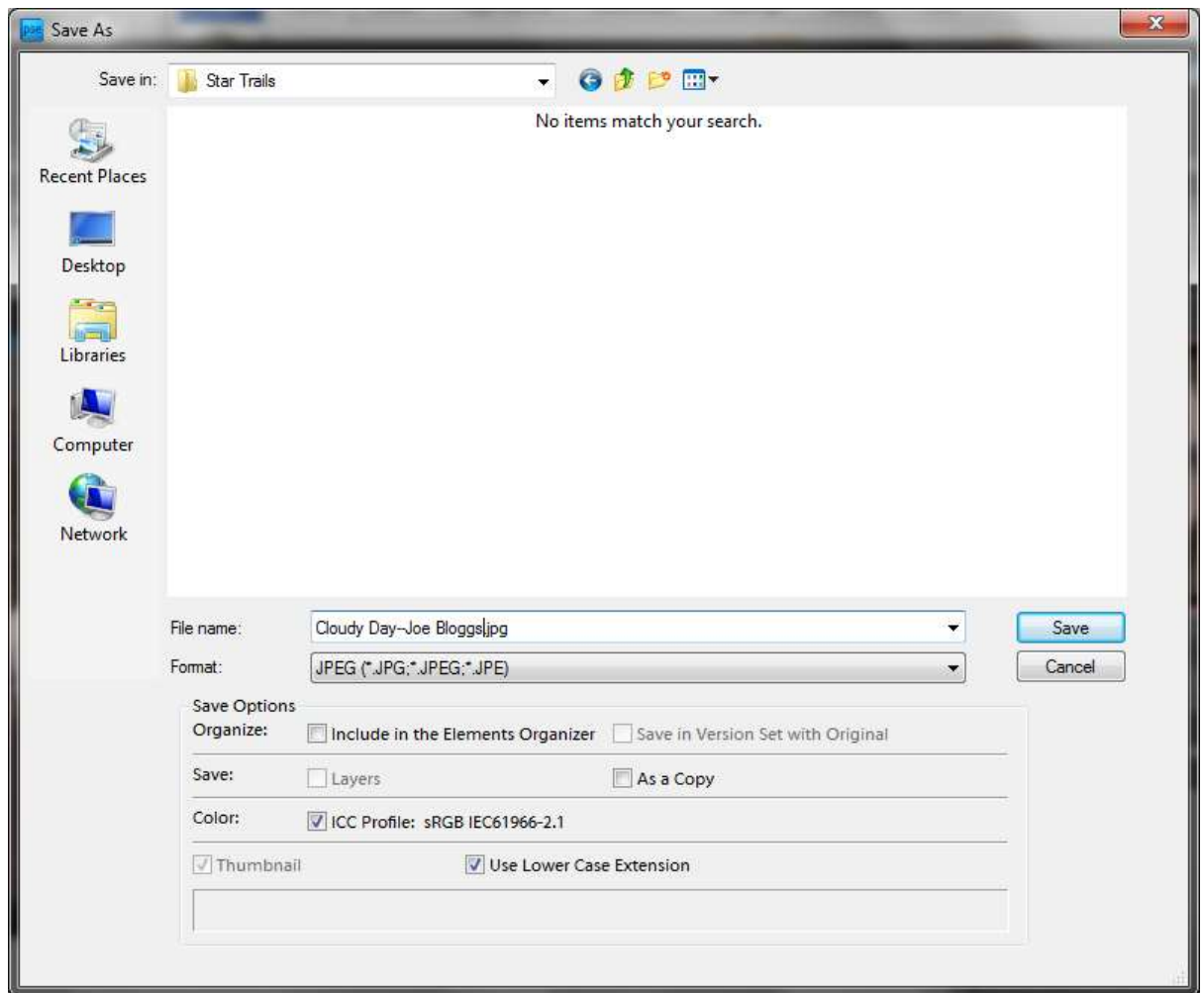
3. Check the box for Constrain Proportions.
4. Check the box for Resample Image and select Bicubic Sharper.
5. Now for a landscape orientated image enter 1400 pixels for the Pixel Dimension Width, the height will be automatically calculated. For a portrait orientated image enter 1050 for the Pixel Dimension Height, the width will be automatically calculated.
6. Press OK and the image will be resized.
7. If you want to submit an image that is 1400px x 1050px where the un-used portions are already filled in with a colour you can make use of the Image menu, Resize, Canvas Size option:



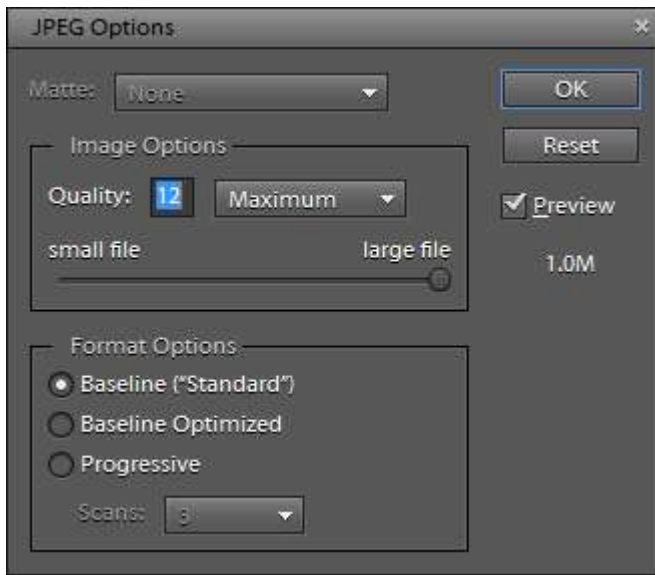
8. Enter the New Size of 1400px wide and 1050px high and set the Canvas extension color to Black, for example. When you press ok black bars will be added top and bottom to a landscape image or left and right for a portrait image:



9. Now you are ready to save the image. From the File menu choose Save As...



10. Select the JPG image format, check the ICC Profile box, enter a name for the image file using the recommended naming convention and press the Save button. The JPG options dialog will then open. Set the image quality to 12 (Maximum).



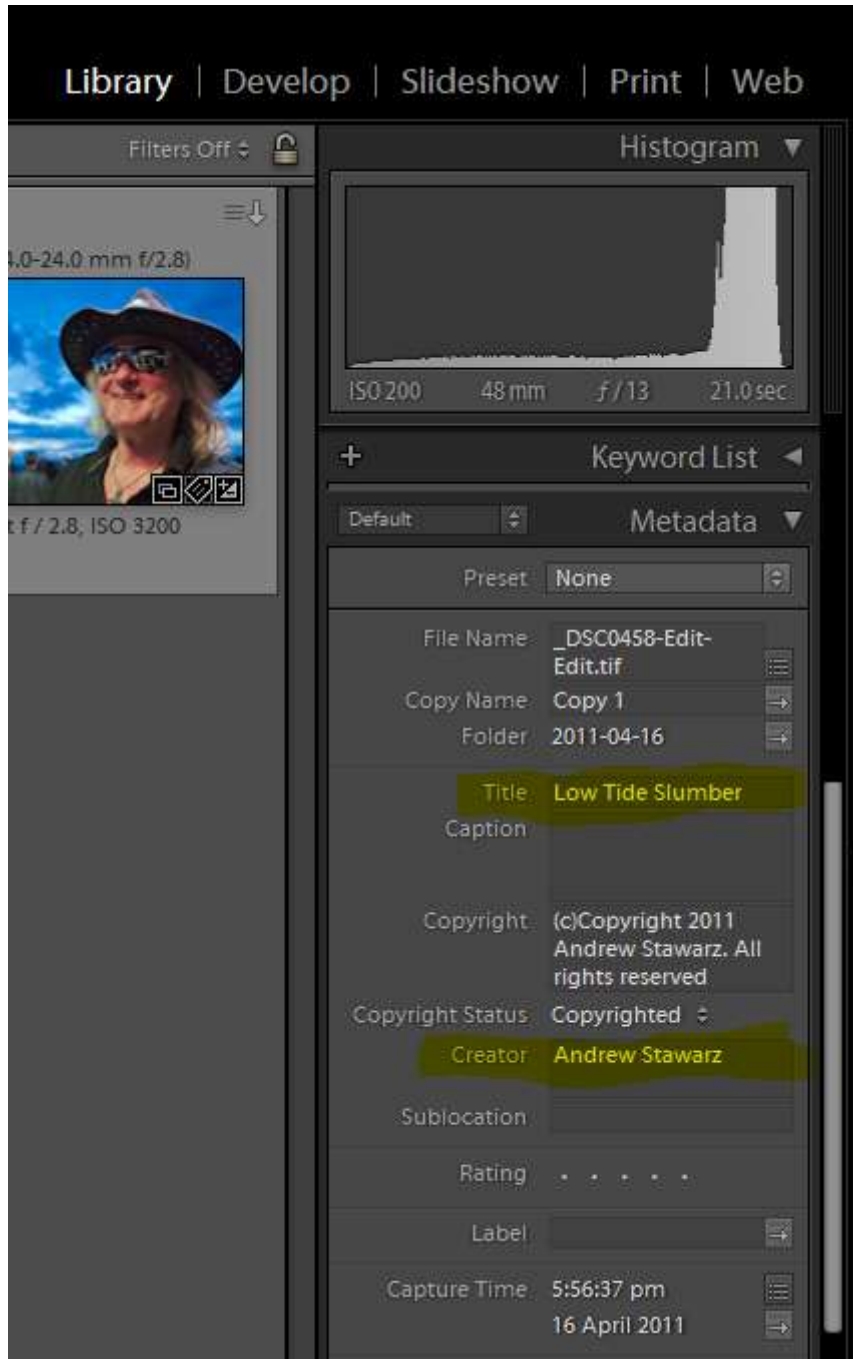
11. Press OK and you're done. Repeat for all the other images.

Exporting from Photoshop CS

The procedures described for Photoshop Elements are also applicable for Photoshop CS. Depending on how you have been working if you choose the more manual approach as well as flattening the image you may need to ensure the image mode is 8bit and if you have been working in a colorspace such as Adobe-RGB you have converted to an sRGB colorspace.

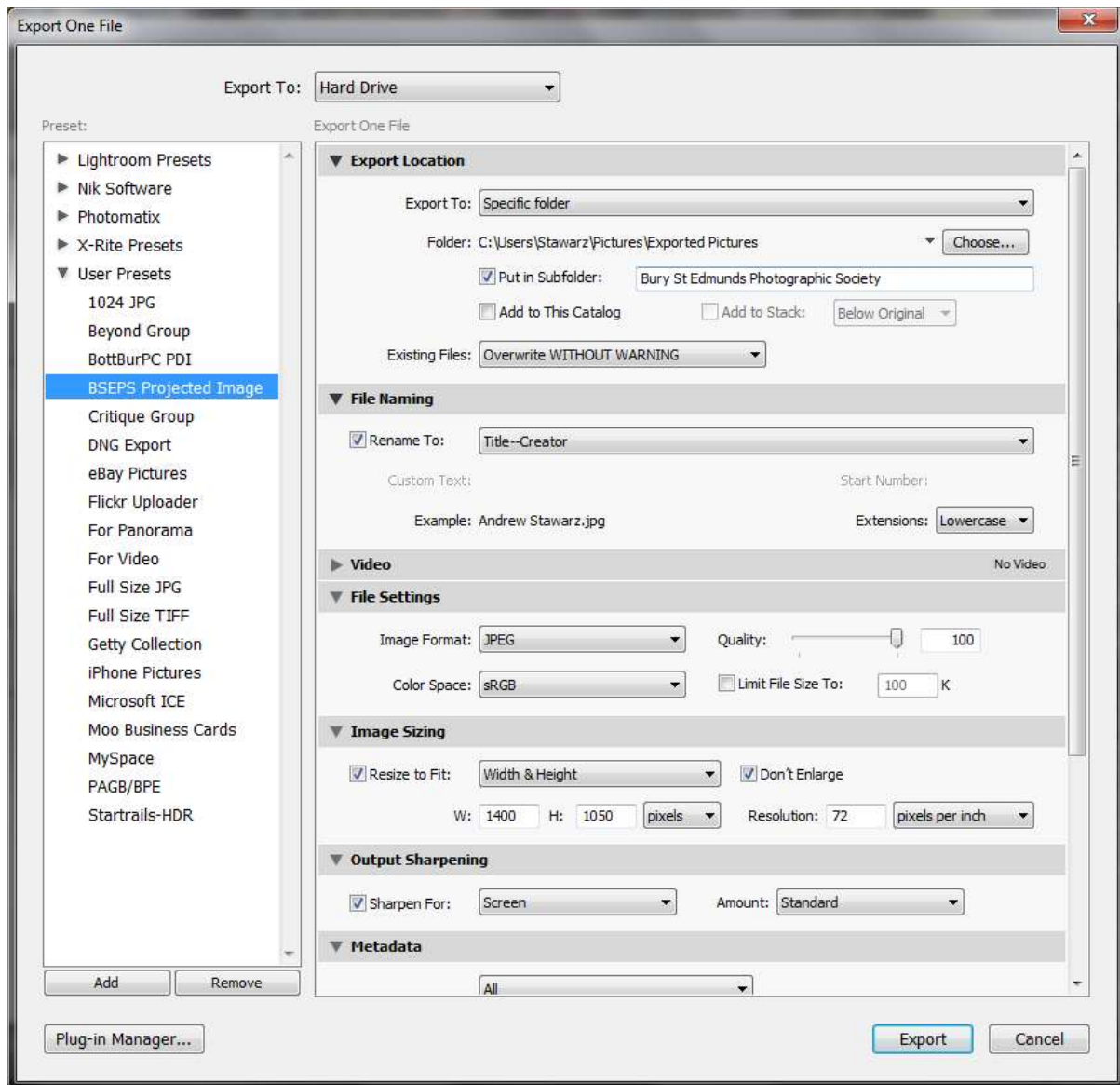
Exporting from Adobe Lightroom

Before you export the image from Adobe Lightroom you provide a title and creator for the image. This can be done within the “Library” module in the “Metadata” section found in the right-hand toolbar. First select the image, expand the Metadata section, select defaults and fill in the sections for “Title” and “Creator”:

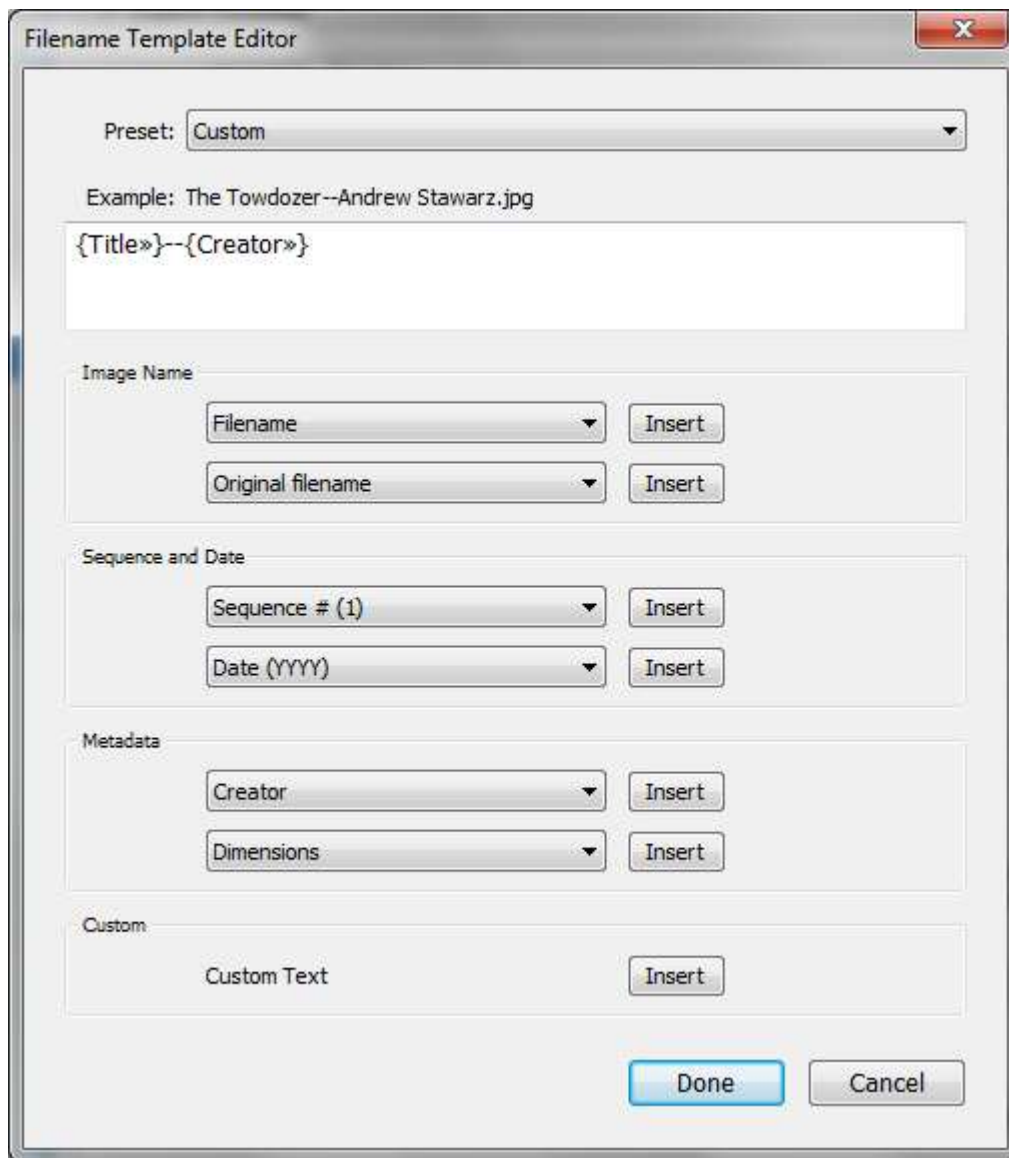


Once the title and creator have been set you are now ready to export the images. Select the images you want to export and from either the File menu, Export... option or by clicking the Export button at the bottom of the left hand toolbar the Export dialog will open.

We will now create an export definition which we can then save as a template for re-use in later competitions or subsequent images you wish to export.



1. We will “Export To:” the “Hard Drive”
2. Set the “Export Location” to Desktop or, by dropping down the list using the arrow on the right, choose a specific location.
3. The “File Naming” should be customised to ensure the file name makes use of your title and creator settings along with the recommended separator. Check the “Rename To:” box then click the arrow on the left of the box and select Edit:



We need to add the Title by selecting the Title field from the first drop-down box under “Metadata” and press “Insert”. Then type the separator – and finally add the Creator field from same drop-down as before. Press Done.

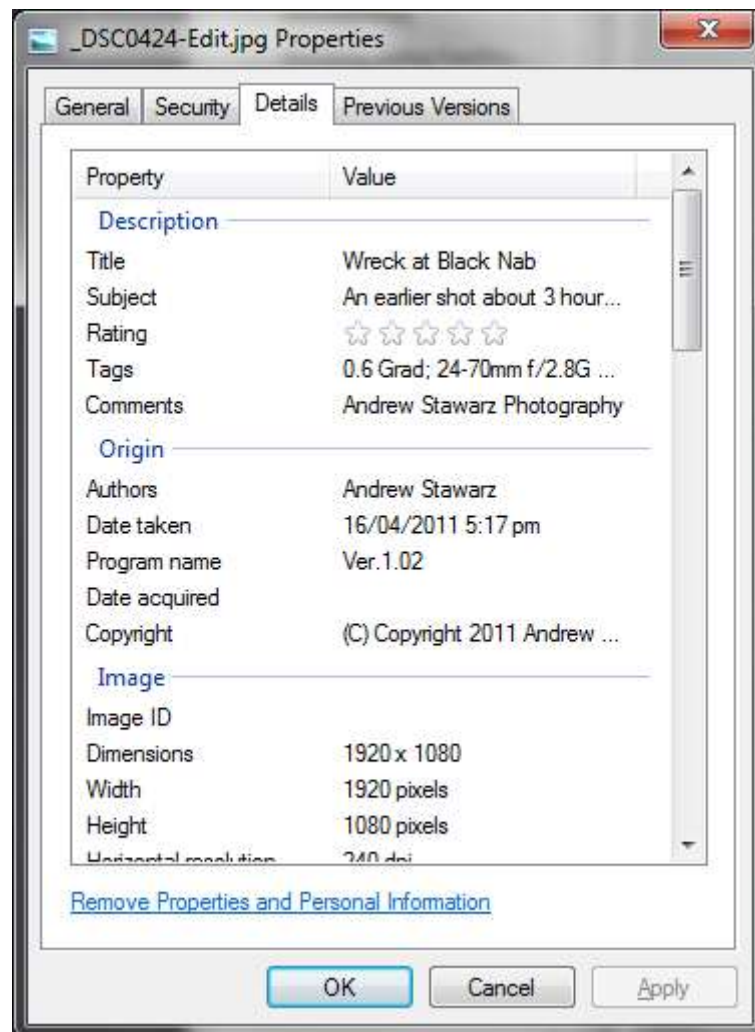
4. For the “File Settings” set the “Format” to JPG, the “Quality” to 100% and the “Color Space” to sRGB.
5. For the “Image Sizing” option check the “Resize to Fit:” box and select “Width & Height”. Then set “W:” to 1400 and “H:” to 1050. Check the “Don’t Enlarge” box and the “Resolution:” to 72 pixels per inch.
6. Finally for “Output Sharpening” you may set up the export to “Sharpen For:” Screen at a Standard “Amount:”.
7. The settings are now complete and we can press the “Done” button.
8. So that we can re-use these settings for later exports press the “Add” button on the first dialog that opened when we selected to export and provide a name and choose the “User

Presets" folder.

9. We are now ready to export the selected files, press the "Export" button. The files will now be written to your selected location with hopefully the correct title and image size.

Adding EXIF/ITPC Data to Images in Windows Explorer

If you want to add the image title and creator to the image metadata after you have created the correctly sized image, for Microsoft Windows users open Windows Explorer and browse for the file. Right-click on the file and select properties and then click on the Details tab:



To enter text for the Title and Authors values, double-click in the value area next to the metadata item use which to edit. An edit box will appear in which you can enter the text required. When complete press the OK button.